



Gorse Close

Kingsthorpe, Northampton

oriordanbond
SALES & LETTINGS



Gorse Close

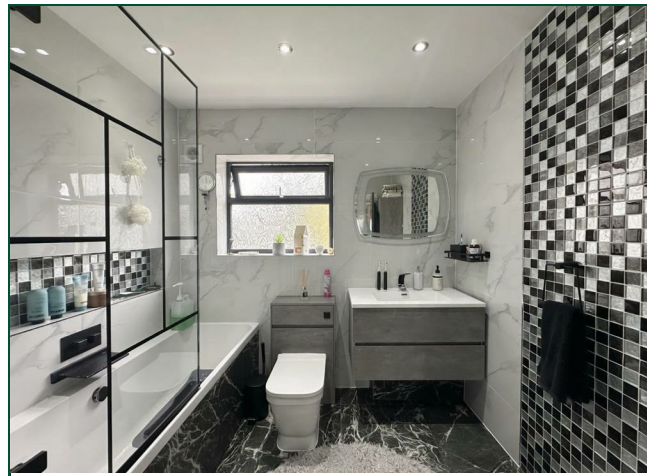
Kingsthorpe
NN2 8ED

Price
£400,000

A well presented four bedroom detached family home that has been modernised and improved throughout by the current owners. The property is situated in a quiet cul-de-sac, in the heart of Kingsthorpe, and has easy access to local schools and shops.

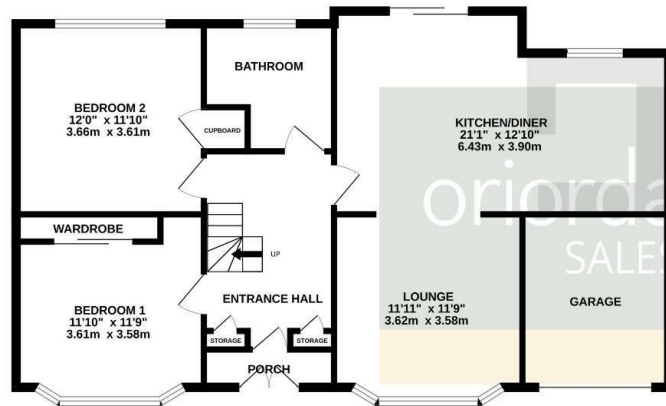
Accommodation comprises large entrance hall with stairs leading to the first floor, open plan lounge/kitchen/diner with newly fitted kitchen and built-in appliances, two double bedrooms and a re-fitted family bathroom. From the first floor landing are two further double bedrooms with ample storage space. Outside is a landscaped rear garden with large patio area great for entertaining, new fencing and side access. To the front of the property is a driveway providing off road parking for several vehicles leading to a single garage. Further benefits include uPVC double glazing and gas radiator heating. (B/1184/L)

- Four bedroom detached family home
- Newly fitted kitchen with built-in appliances
- Re-fitted family bathroom
- Gas radiator heating
- Landscaped rear garden
- Ample off road parking and garage

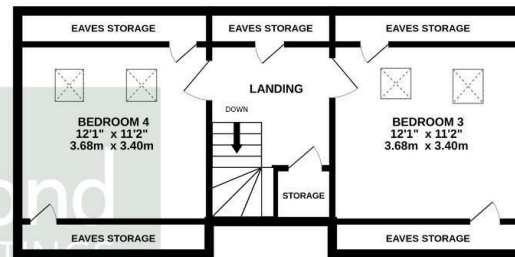




GROUND FLOOR
948 sq.ft. (88.1 sq.m.) approx.

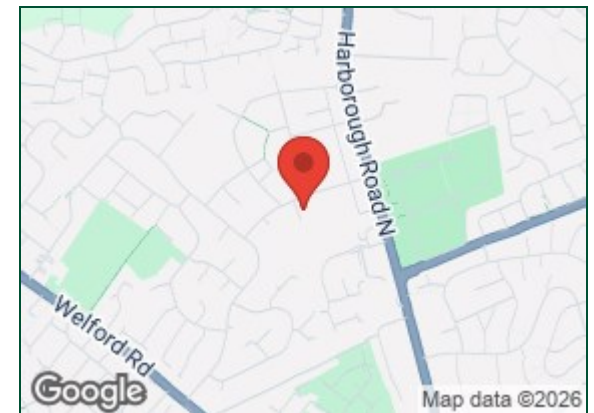


1ST FLOOR
472 sq.ft. (43.9 sq.m.) approx.



TOTAL FLOOR AREA : 1421 sq.ft. (132.0 sq.m.) approx.

Whilst every attempt has been made to ensure the accuracy of the floorplan contained here, measurements of doors, windows, rooms and any other items are approximate and no responsibility is taken for any error, omission or mis-statement. This plan is for illustrative purposes only and should be used as such by any prospective purchaser. The services, systems and appliances shown have not been tested and no guarantee as to their operability or efficiency can be given.
Made with Metropix ©2026



Additional information

- Council Tax Band: C
- Energy Efficiency Rating: C

Viewing

Viewing strictly by appointment – details below

Disclaimer

O’Riordan Bond Estate Agents Limited has not tested apparatus, equipment, fittings or services and so cannot verify they are in working order. The buyer is advised to obtain verification from their solicitor or surveyor.

O’Riordan Bond Kingsthorpe Sales

01604 722007

kingsthorpe@oriordanbond.co.uk

